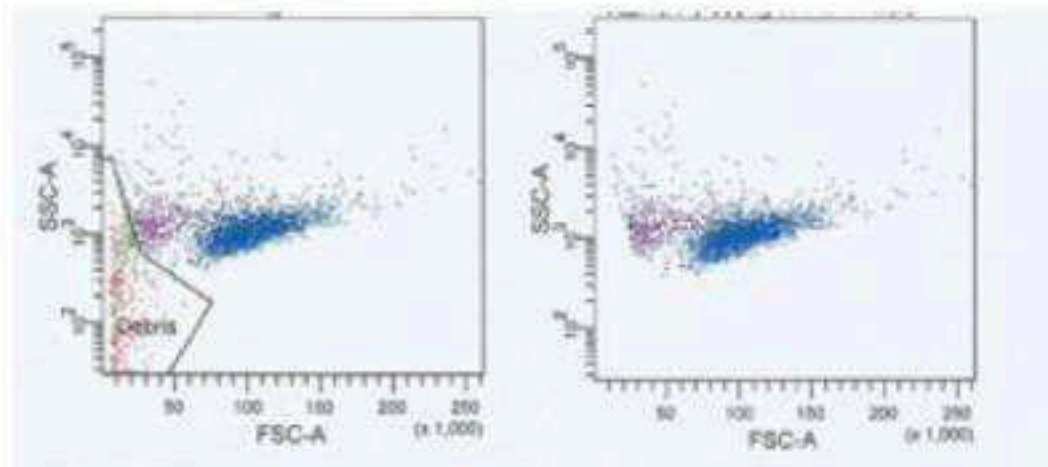
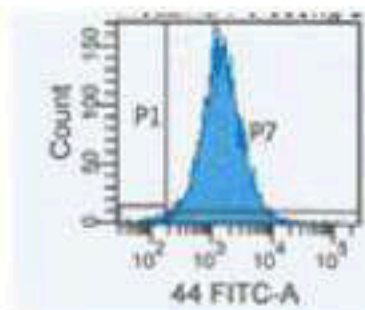




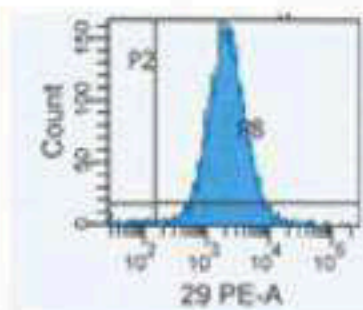
# ANALISI CITOFLUORIMETRICA DELL'IMMUNOFENOTIPO POSITIVITA'



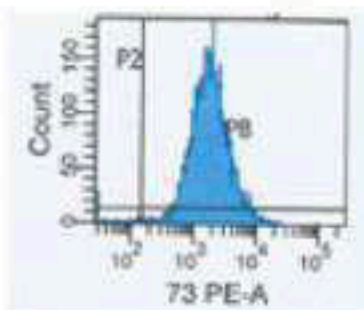
## ESPRESSIONE DI MARCATORI IMMUNOFENOTIPICI SPECIFICI DELLE MSC



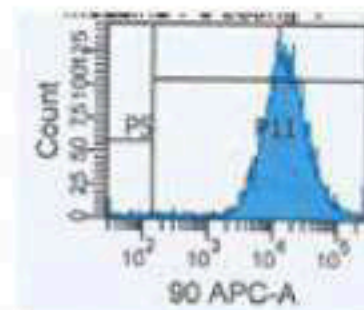
CD44+ 98.8%



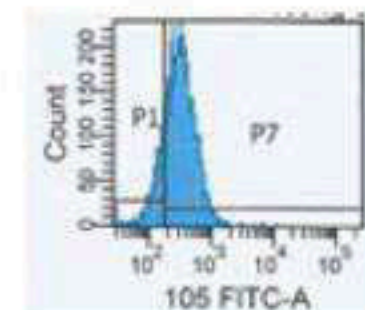
CD29+ 99.2%



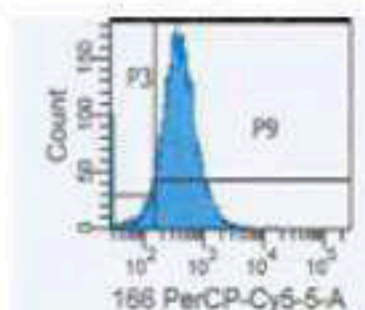
CD73+ 98.4%



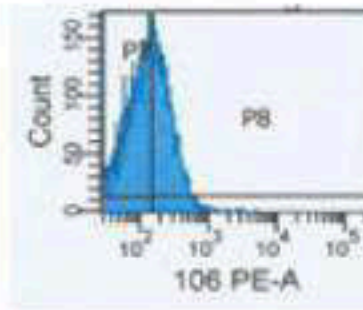
CD90+ 98.8%



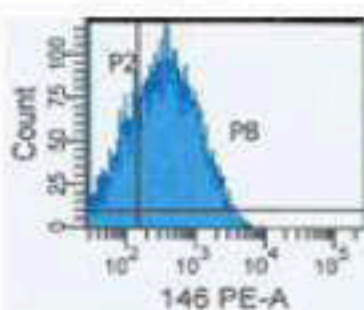
CD105+ 80.0%



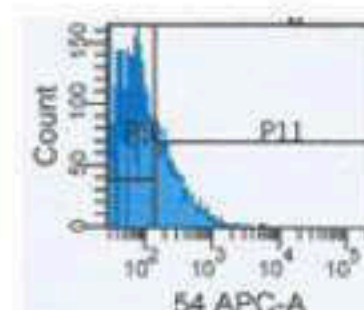
CD29+ 89.7%



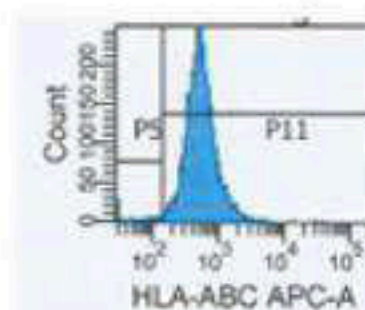
CD106+ 36.9%



CD146+ 72.8.9%



CD54+ 24.5%



HLA ABC+ 98.1%